

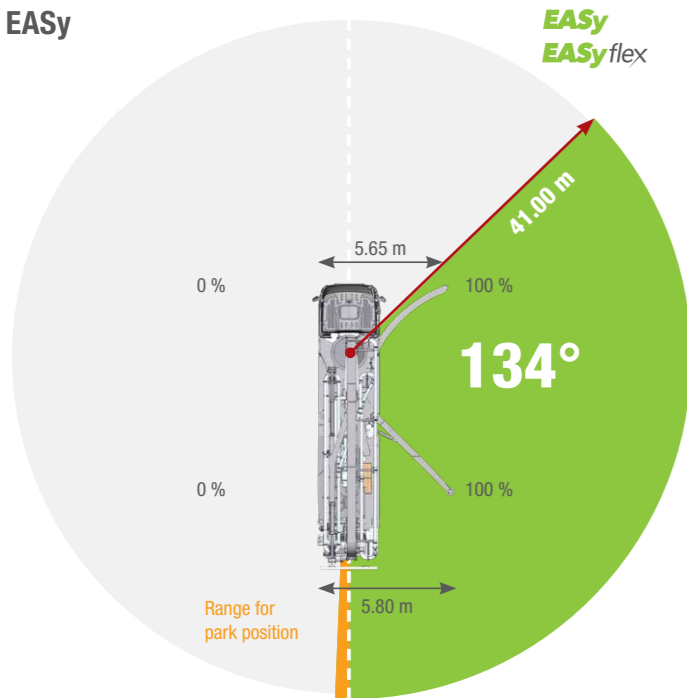
EASy and EASyflex

The outrigger systems EASy and EASyflex extend the range of applications of the S 47 SX III. With EASy, the concrete pump can be safely supported on one side, if required, whilst covering a working range of 134°. EASyflex provides further outrigger combinations and as such, more flexibility on the jobsite. In this way, pump applications can be achieved with maximum working safety even in difficult, restricted spaces. More flexibility for more safety.

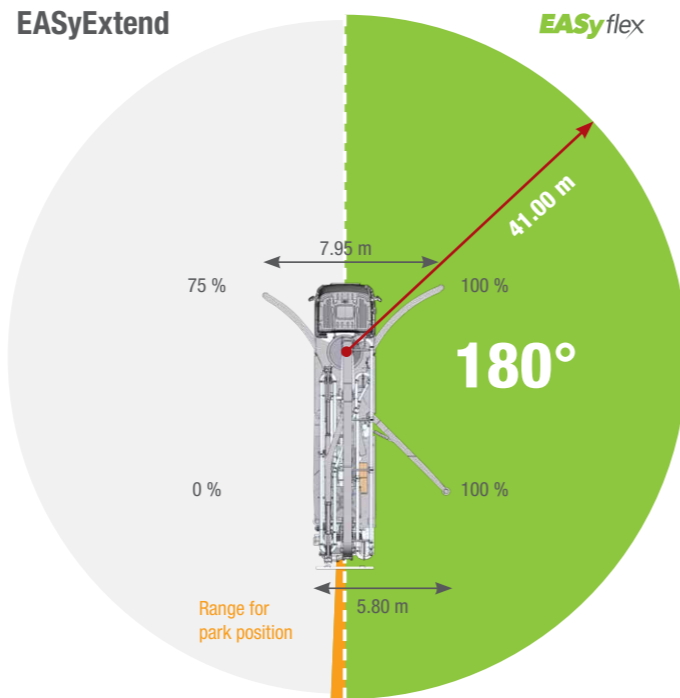
S 47 SX III Truck-mounted concrete pump

Working range

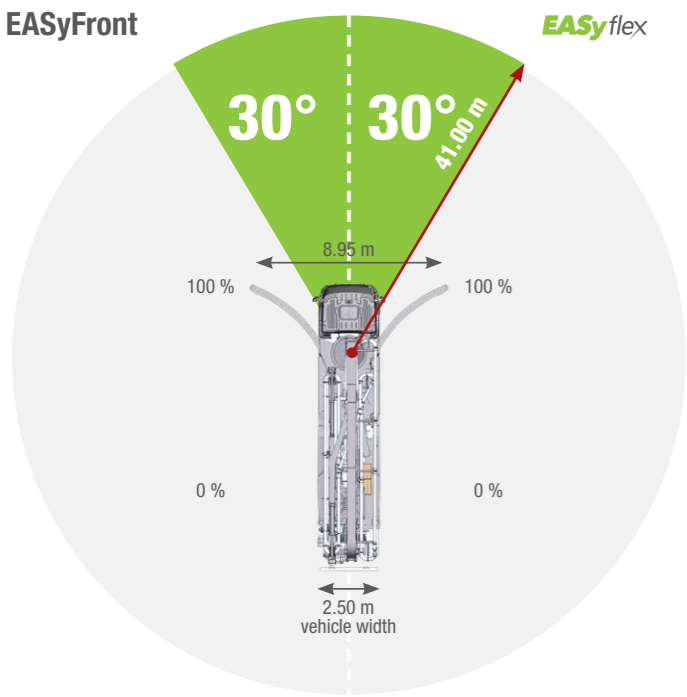
EASy



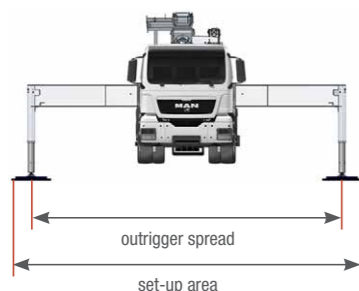
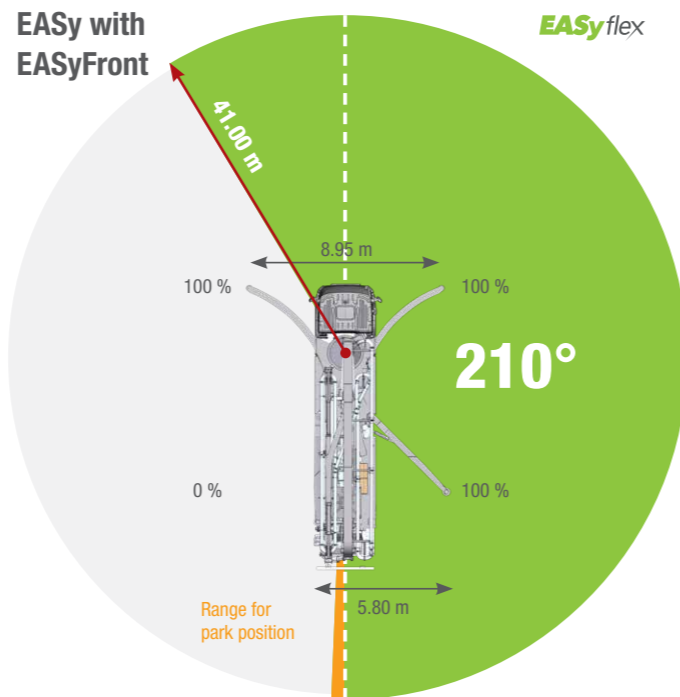
EASyExtend



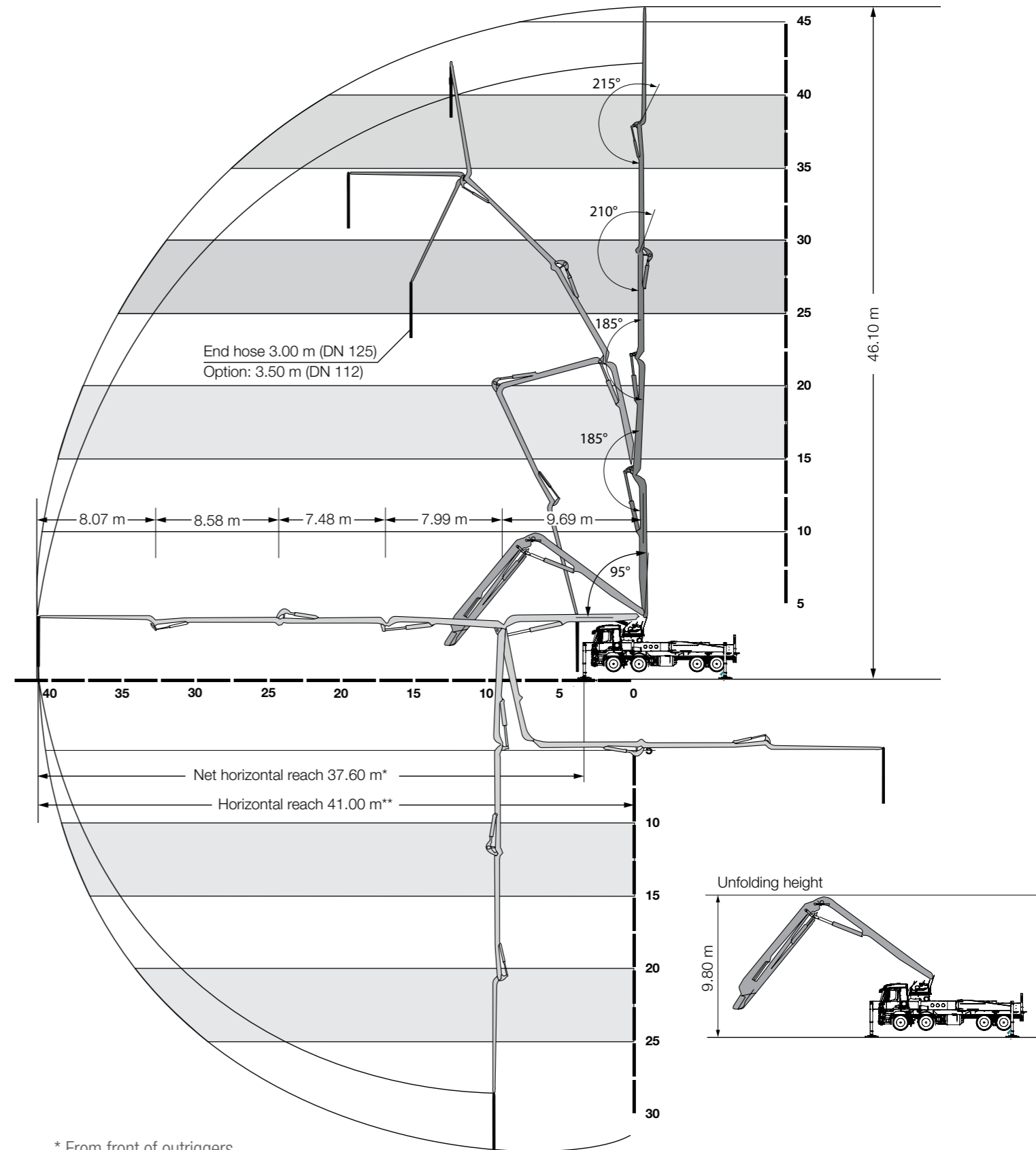
EASyFront



EASy with EASyFront



The outrigger spreads as specified are measured from the centre of the outrigger leg. Any cribbing or underlay timbers must be taken into account when determining the required set-up area.



* From front of outriggers

** From centre of turret

S 47 SX III Truck-mounted concrete pump

Technical data

Performance

Pump kit		P2023-110/75	P2525-120/85
Drive	l/min	636	636
Delivery cylinders	mm	230 x 2,000	250 x 2,500
Concrete output max.	m ³ /h	161	162
Pressure on concrete max.	bar	85	85
Stroke rate max.	1/min.	32	22
Concrete valve		B-ROCK	B-ROCK

Hydraulic system

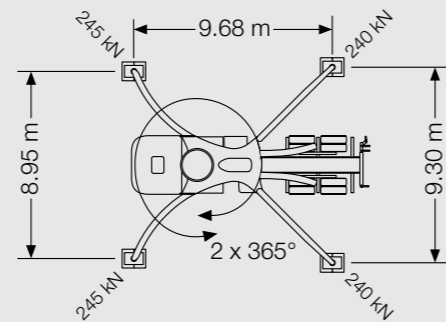
Design		open system
Hydraulic tank	l	480

Boom 47 R

Delivery line		DN 125
Length of end hose	m	3.00 with end hose DN 125 / 3.50 (1.00 + 2.50) with end hose DN 112
Vertical reach	m	46.10
Reach depth	m	32.40
Horizontal reach	m	41.00 (from centre of turret)
Net horizontal reach	m	37.60 (from front of outriggers)
Number of boom sections		5
Height of the inflexion points	m	4.30 / 14.00 / 22.00 / 29.50 / 38.00
Slewing range		2 x 365°
Folding height	m	9.80

Support

Outrigger width, front	m	8.95
Outrigger width, rear	m	9.30
Outrigger load, front	kN	245
Outrigger load, rear	kN	240

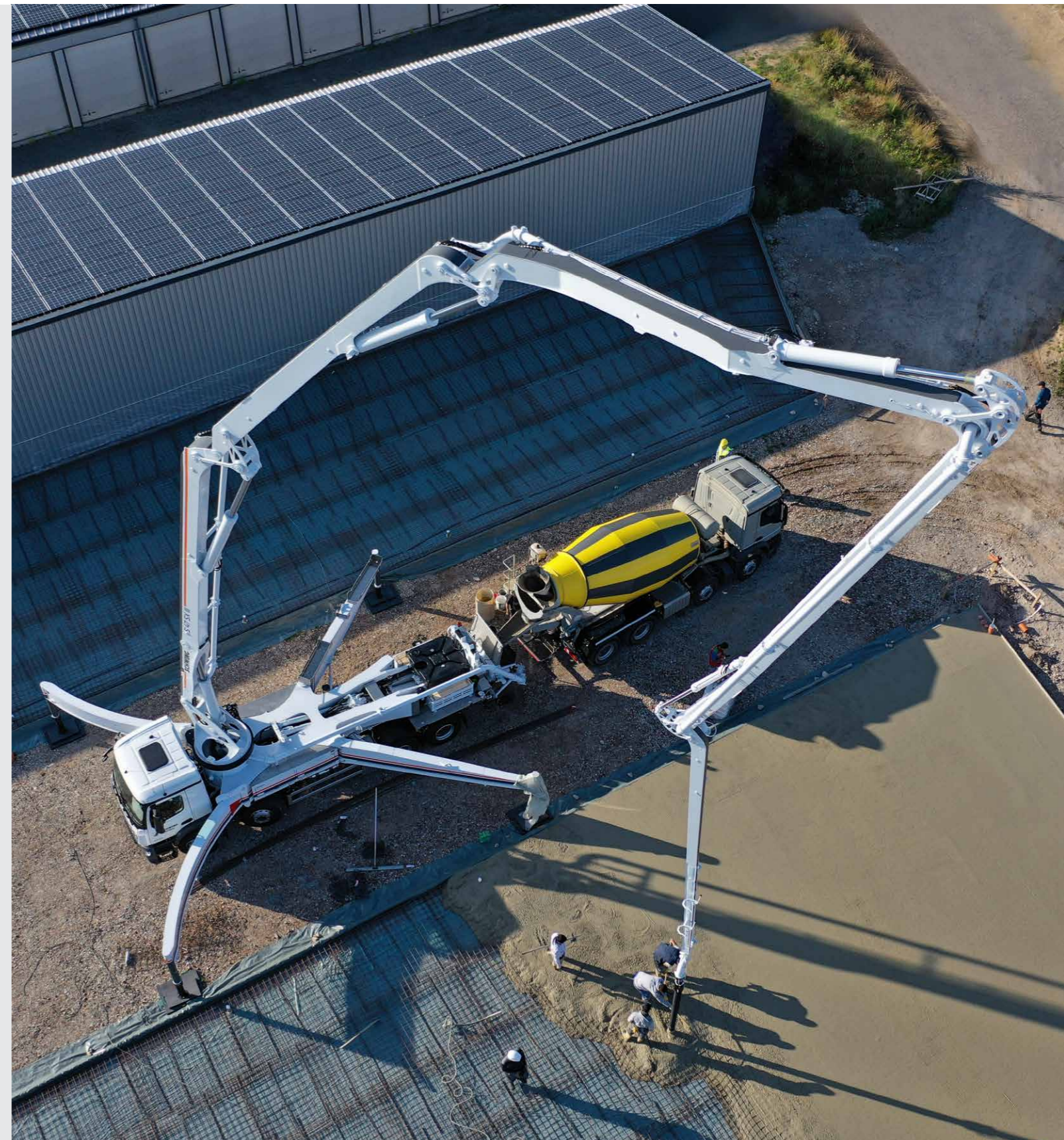


Chassis (examples*)

		Mercedes-Benz Arocs 3546	MAN TGS 35.420
Axles configuration		8x4	8x4
Wheelbase	mm	5,750	5,750
Length	mm	11,880 / 11,850	11,840 / 11,810 (with / without underride guard)

Miscellaneous

Water tank	l	610
------------	---	-----



*Can be mounted on different chassis frames